

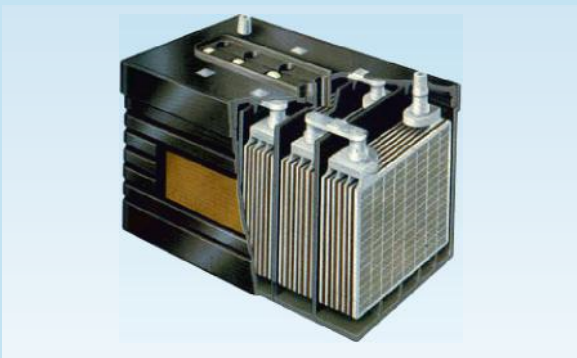
## SMF VRLA BATTERY

- ▶ HIGH SPECIFIC ENERGY
- ▶ DESIGNING LIFE : 10 YEARS @25°C
- ▶ EXCELLENT CYCLIC PERFORMANCE
- ▶ RECOVERY PERFORMANCE
- ▶ HIGH PURITY MATERIAL



## ABOUT US

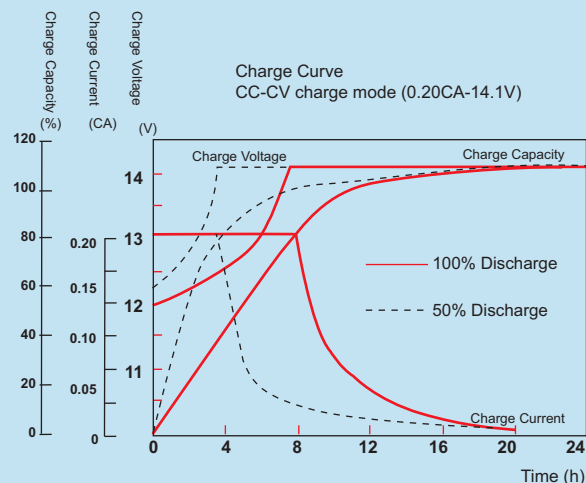
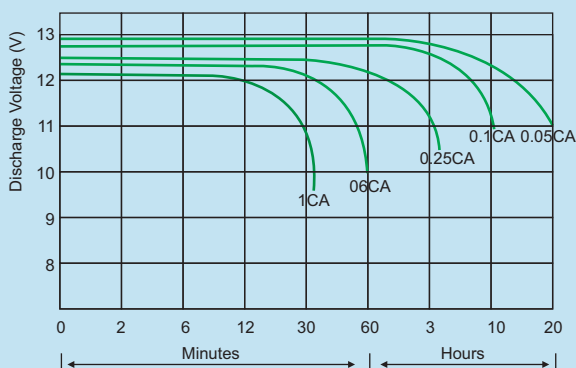
We are a well-established company with a strong infrastructural set up. Our Manufacturing plant is fully equipped with the latest machinery. Our asset is our team of highly adequate and technically qualified professionals, who work in close association with our customers and provide them with liable solutions. We at Elson are always ready for constant improvement and innovation of new products to meet the demand of the market. Ever since commencement of business, the only objective that our organization is to develop quality batteries, which are being used in the market. In our quest for excellence, we have streamlined our processes in a way that enables us to manufacture products that match our clients needs. Our products have been manufactured under the supervision and expert guidance of techno crafts, electronic engineers and experts who are masters in their field. Each of our product bears a mark of quality and are high in performance. They can easily withstand wide electricity variations and have high voltage frequencies.



## DESIGN AND CONSTRUCTION FEATURES

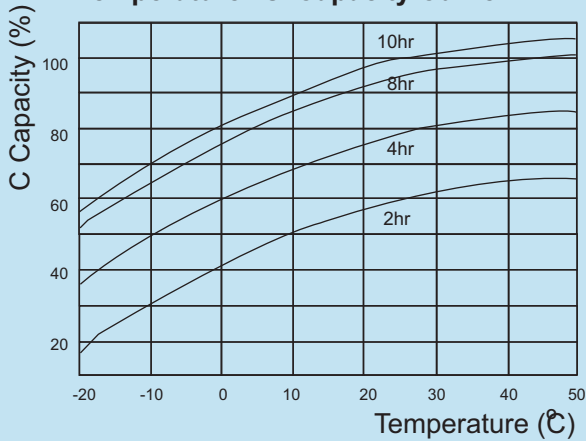
- Proprietary Positive Grid Alloy
- Proprietary positive Paste Composition
- Long Shelf Life above 6 Months
- Deep Discharge Recovery Even after 7 days
- Fast Charging Capability Within 6-8 hours
- Superior High rate Performance at 5 to 60 Minute rate of Discharge

## DISCHARGE & CHARGING CHARACTERISTICS

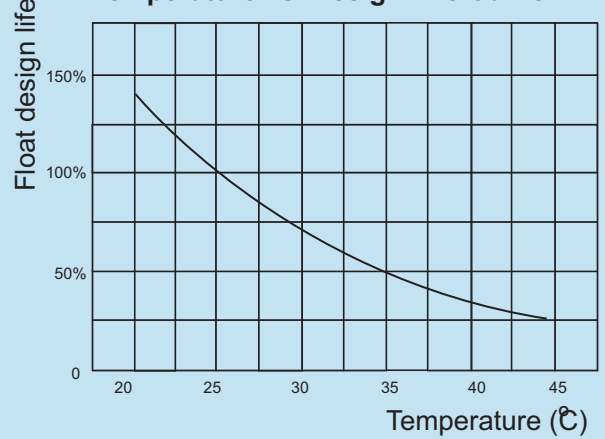


## PERFORMANCE CHARACTERISTICS

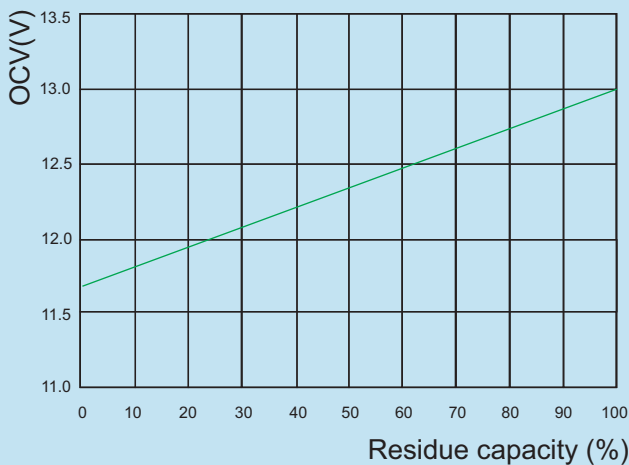
Temperature vs. Capacity Curve



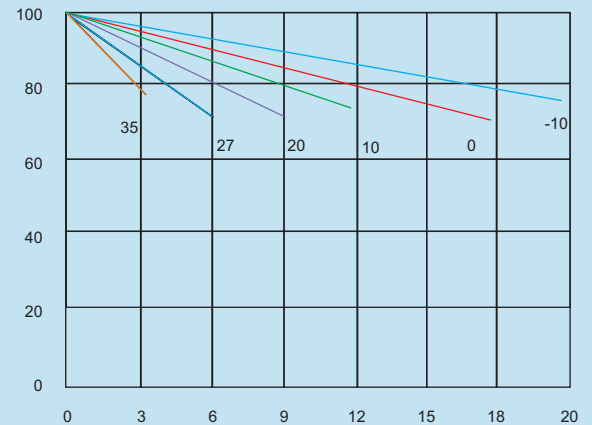
Temperature vs. Design Life Curve



OCV vs state of charge



Residual Capacity VS. Storage time



## APPLICATION

UPS System, Telecommunication Equipment, Fire Alarm & Security System, Office Automation, EP ABX, Banking & Financial Market, Data Center, Street Light, Electronic Weighing Scale and in many other applications.



## PRODUCT SPECIFICATIONS

Model	Nominal Voltage	Rated Capacity @ C20 at 27OC (10.50 EBV)	Dimensions (mm)			Weight (Kgs ± 5%)
			Length (± 5mm)	Width (± 5mm)	Height (± 5mm)	
ESB 42-12	12	42	198	167	175	13.5
ESB 65-12	12	65	350	167	190	22
ESB 80-12	12	80	307	169	240	23
ESB 100-12	12	100	330	173	222	29
ESB 120-12	12	120	406	171	240	35
ESB 150-12	12	150	485	170	240	44
MAXPRO20012	12	200	522	240	220	60

\* Also Available in 75Ah & 90Ah

Electrolyte	Immobilized H <sub>2</sub> SO <sub>4</sub>
Positive Plate Alloy	"Arsenic and Cadmium Free Pb-Ca-Sn Alloy"
Positive Plate Type	Flat Pasted
Type of Connection	Bolted
Type of Separator Material	Absorptive Glass Mat
Container Material	"ABS"
Recommended Charging Method	Constant Potential
Shelf life at 27°C	6 Months
Self Discharge	<1% per week
Float Charge Voltage	13.5V - 13.62V
Boost Charge Voltage	13.8V - 14.1V
Charging Time from 20% SOC TO 90% SOC	6-8 Hrs
Operating Temperature Range	"0°C to 50°C"
Design Life at 27°C	10 Years
Cyclic Service Life (@27°C)	
At 20% D.O.D	1400 Cycles
At 50% D.O.D	650 Cycles
At 80% D.O.D	300 Cycles
Product Performance Conforms to	JIS C 8702

\* Technical Parameters are Subject to Change due to Continuous improvements and R&D

